

Gardening for Native Bees



- Shady -

- a. Vine Maple
- b. Low Oregon Grape
- c. Piggyback
- d. Fringecup

- Part Sun/ Part Shade -

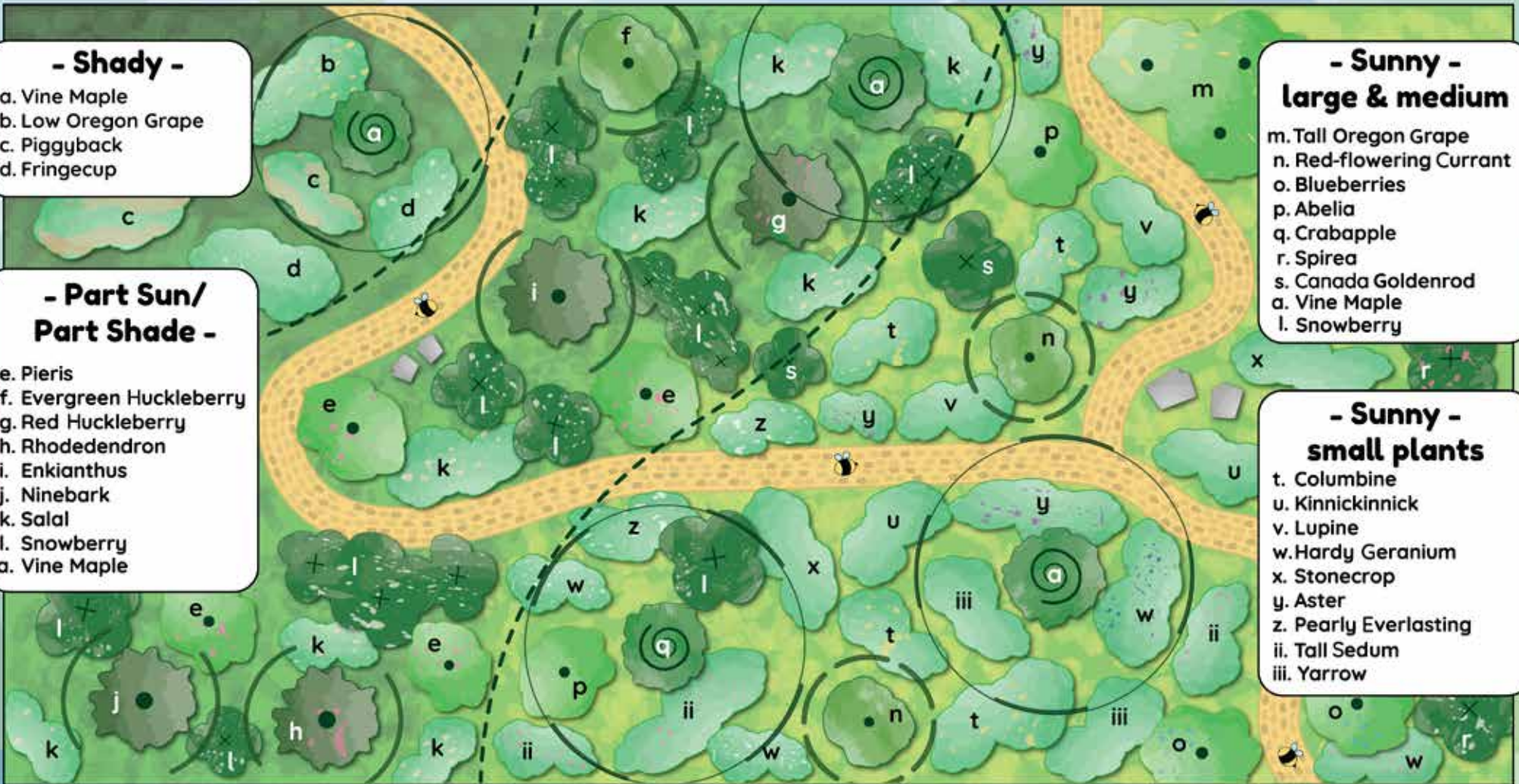
- e. Pieris
- f. Evergreen Huckleberry
- g. Red Huckleberry
- h. Rhododendron
- i. Enkianthus
- j. Ninebark
- k. Salal
- l. Snowberry
- a. Vine Maple

- Sunny - large & medium

- m. Tall Oregon Grape
- n. Red-flowering Currant
- o. Blueberries
- p. Abelia
- q. Crabapple
- r. Spirea
- s. Canada Goldenrod
- a. Vine Maple
- l. Snowberry

- Sunny - small plants

- t. Columbine
- u. Kinnickinnick
- v. Lupine
- w. Hardy Geranium
- x. Stonecrop
- y. Aster
- z. Pearly Everlasting
- ii. Tall Sedum
- iii. Yarrow



Key



10'-12' Shrub



8' Shrub



6' Shrub



4-5' Plants



Small Plants



Boulder



Plant Guide

Use the map and this list of bloom times as a guide to planting a garden that will feed native bees from spring to fall!

Small Plants (Under 3')	
Plant Name	Season
Aster	Spring Summer Fall
Fringecup	Spring Summer Fall
Hardy Geranium*	Spring Summer Fall
Kinnickinnick	Spring Summer Fall
Low Oregon Grape	Spring Summer Fall
Piggyback	Spring Summer Fall
Pearly Everlasting	Spring Summer Fall
Stonecrop	Spring Summer Fall
Tall Sedum*	Spring Summer Fall
Western Columbine	Spring Summer Fall
Wild Yarrow	Spring Summer Fall

Medium Plants (3-6')	
Plant Name	Season
Abelia*	Spring Summer Fall
Cultivated Blueberries*	Spring Summer Fall
Canada Goldenrod	Spring Summer Fall
Lily-of-the-Valley Bush*	Spring Summer Fall
Lupine	Spring Summer Fall
Salal	Spring Summer Fall
Snowberry	Spring Summer Fall
Spirea*	Spring Summer Fall
Tall Oregon Grape	Spring Summer Fall

Tall Plants (Over 6')	
Plant Name	Season
Crabapple	Spring Summer Fall
Evergreen Huckleberry	Spring Summer Fall
Pacific Ninebark	Spring Summer Fall
Redvein Enkianthus	Spring Summer Fall
Red-flowering Currant	Spring Summer Fall
Red Huckleberry	Spring Summer Fall
Rhododendron	Spring Summer Fall
Vine Maple	Spring Summer Fall

We have more resources on native bees and other pollinators on our website! To learn more, visit snohomishcd.org/pollinators or scan the QR code.

